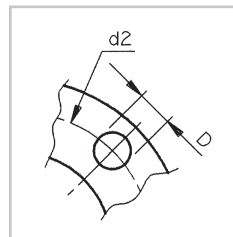
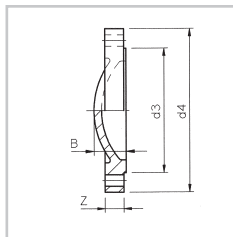


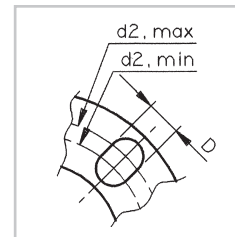
BLANK FLANGE

Blindflens
Blindflansch
Bride pleine
Flangia cieca
Brida ciega

PVC-U



TYPE A



TYPE B

ART.CODE	Dia	DN	d2	d3	d4	Z	B	NxD	NORM	TYPE	QUANTITY
15007202	16	10	60	29	90	10	13.5	4x14	•	A	50
15007269	20	15	60.5/63	34	95	11	14.5	4x16	••	B	75
15007203	25	20	70/73	41	105	12	16	4x16	••	B	50
15007270	32	25	79/83	50	115	14	19	4x16	••	B	50
716286	40	32	91/100	61	140	15	20	4x18	••	B	30
716422	50	40	101/110	74	150	16	22	4x18	••	B	40
719511	63	50	120.5/124	91	165	18	24.5	4x18	••	B	15
716411	75	65	139.5/144	106	185	19	26.5	4x19	••	B	14
716413	90	80	152.5/159	125	200	20	30	8x19	••	B	15
716415	110	100	181/190.5	150	220	22	34.5	8x19	••	B	15
716417	125	100	190	166	235	26	38.5	8x18		A	10
716412	140	125	215	184	250	26	39	8x23	••	A	10
716416	160	150	240	209	285	28	43.5	8x24	••	A	6
719513	200	175	270	248	315	36	63	8x22	•••	A	5
15007632	225	200	295	260	340	36	63	8x22	•	A	5
719517	250	225	325	303	370	36	63	8x22	•••	A	5
15007271	280	250	350	328	395	36	65	12x22	•	A	1
719519	315	300	400	378	445	36	65	12x22	•	A	1
15007208	355	350	460	430	505	38	67	16x22	•	A	1
15007699	400	400	515	482	565	42	71	16x26	•	A	1

Connecting dimension according to...
Bevestigingsmaat volgens...
Anschlußmasse zufolge...

Mesure de assujettir suivant...
Misura di attaccare secondo...
Medida de sujetar según...

- ISO/DIN 2501 PN10
- ISO/DIN 2501 PN10 / ANSI B16.5
- ISO 2536 PN10