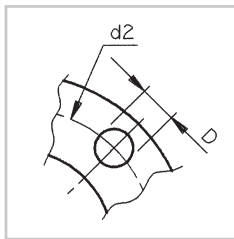
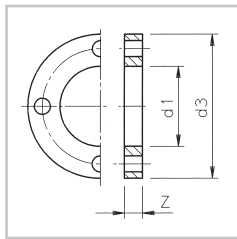
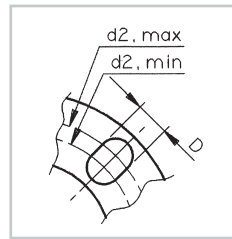


# BACKING FLANGE

Flens  
Flansch  
Bride  
Flangia  
Brida



TYPE A



TYPE B

ART.CODE	Dia	DN	d1	d2	d3	Z	NXD	NORM	TYPE	QUANTITY
15007259	16	10	23	60	90	10	4x14	•	A	50
15005167	20	15	28	60.5/63	95	11	4x16	••	B	50
716231	25	20	34	70/73	105	12	4x16	••	B	50
716232	32	25	42	79/83	115	14	4x16	••	B	50
716233	40	32	51	91/100	140	15	4x18	••	B	30
716234	50	40	62	101/110	150	16	4x18	••	B	75
716235	63	50	78	120.5/124	165	18	4x18	••	B	50
716236	75	65	92	145	185	19	4x18	•	A	30
716237	90	80	110	160	200	20	8x18	•	A	25
716238	110	100	133	180	220	22	8x18	•	A	15
716239	125	100	150	190	235	26	8x18		A	15
716240	140	125	167	210	250	26	8x18	•	A	15
716241	160	150	190	240	285	28	8x22	•	A	10
716468	200	175	235	270	315	36	8x22	•••	A	5
716242	225	200	251	295	340	36	8x22	•	A	5
716470	250	225	277	325	370	36	8x22	•••	A	5
716243	280	250	309	350	395	36	12x22	•	A	1
716244	315	300	345	400	445	36	12x22	•	A	1
716245	355	350	388	460	505	38	16x22	•	A	1
716488	400	400	442	515	565	42	16x26	•	A	1



Connecting dimension according to...  
Bevestigingsmaat volgens...  
Anschlussmasse zufolge...

Mesure de assujettir suivant...  
Misura di attaccare secondo...  
Medida de sujetar según...

- ISO/DIN 2501 PN10
- ISO/DIN 2501 PN10 / ANSI B16.5
- ISO 2536 PN10